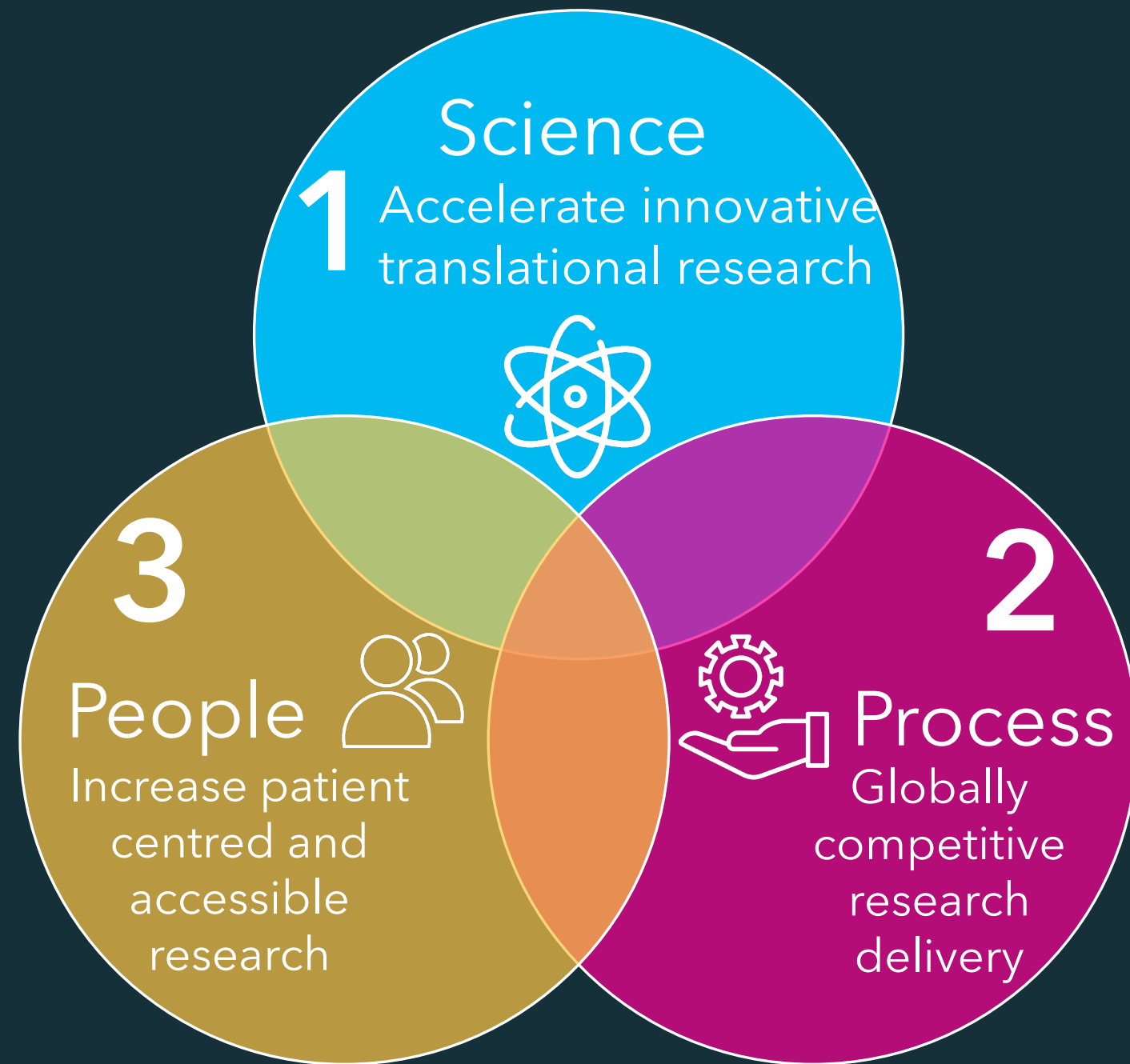


Our Vision

To build a truly collaborative, internationally competitive national network of early phase experimental cancer medicine centres, translating the most promising innovations from the academic and industry sectors into the cancer medicines of tomorrow



<p>Innovative Translational Research</p> <ul style="list-style-type: none"> Translational Research Forum Haematology Network UK Therapeutic Cancer Prevention Network Group 	<p>Competitive Operational Delivery</p> <ul style="list-style-type: none"> Centre Business Leads forum Clinical Trial Coordinators Network Group 	<p>Patient Centred & Accessible Research</p> <ul style="list-style-type: none"> ECMC Patient and Public Involvement Group Junior Investigator Network Group Research Nurse Network Group
---	---	--

Improved Study Set Up

Globally Competitive Research Delivery

- Working in partnership with the Health Research Authority and Clinical Research Recovery, Resilience & Growth board
- Working with key clinical trial stakeholders to create transformative change
- Create routes that allow us to compete on set-up timeframes on a global scale
- Sustainability and transferability of learnings beyond early phase cancer

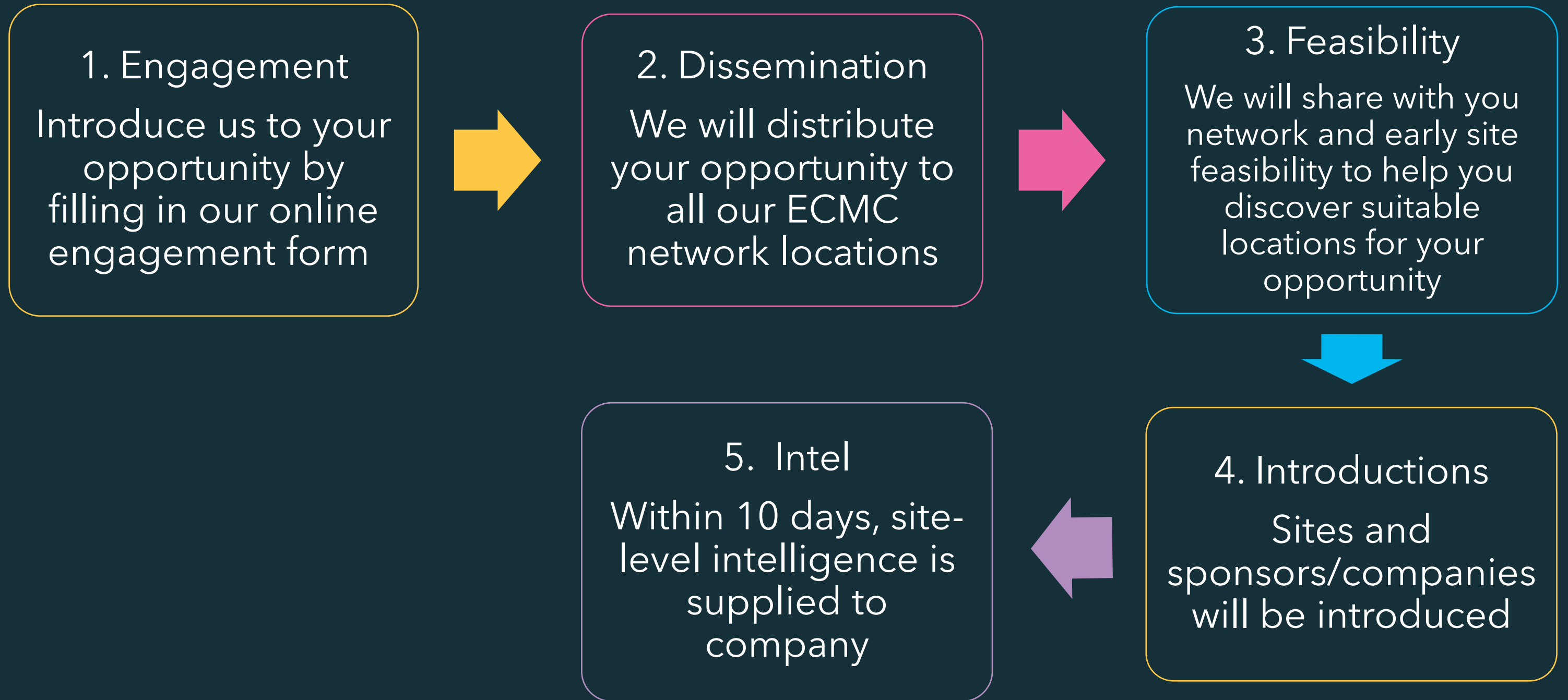
- 1** Pan-age network
- 4** Nations of the UK
- 29** Experimental Cancer Medicine Centres
- ~1000** Trials opened*
- 9,500** Patients recruited*
- £150m** Invested to date
- *2017-22



The Network and Industry

We are:

- A single point of entry for early advice and feasibility, network engagement and study placement
- The go to resource for a streamlined, simplified expression of interest procedure that makes use of a network-wide standard template
- The holder of a network-wide master confidentiality agreement - one signature to get access to 17 adult & 12 paediatric centres across the UK



EC-Trial Finder - Advancing patient access to experimental therapies

- **Provision of accurate & up-to-date:** monthly trial information updates are submitted directly by the local NHS Location EC Trial Finder coordinator, assuring that the database stays accurate and up-to-date
- **Search and filtering functionality:** custom designed to more quickly identify suitable trials without scrolling hundreds of options
- **Up to date contact details:** enabling you to quickly contact the site to gather further information and determine whether your patients may be eligible



Over **400 trials** listed in EC Trial Finder that are open to patients



Sheona Scales
Head of Programme Office



Sharan Sandhu
Network Delivery Lead



Catherine Cowell
Translational Research Lead



Hannah Brown
Project Manager (workforce)



Caroline-May Huxley
Children and Young People Manager



Lamise Nasr
Paediatric Network Manager



Mollie Stebbings
Data Analyst



Amy Wiles
Project Officer



Neil Bhattacharjee
Project Officer



Eleanor Davies
Intern

ECMC network

- Adult ECMC
- Paediatric ECMC
- Both Adult and Paediatric ECMC

LONDON

- Barts
- Imperial
- The Institute of Cancer Research / Royal Marsden
- King's Health Partners
- Great Ormond Street / University College London